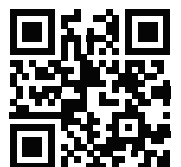


2025  
**HUMAN  
HEALTH**  
PRODUCT CATALOG

**VITROSENS**



V0.V008-21012025

**IN**  
**TEST**  
WE  
TRUST

---

# Contents

ABOUT US	4
IMMUNOCHROMATOGRAPHY TECHNOLOGY	8
SEXUALLY TRANSMITTED DISEASES	10
RESPIRATORY DISEASES	12
GASTROINTESTINAL DISEASES	14
CARDIAC MARKERS	16
TROPICAL DISEASES	18
TUMOR MARKERS	20
FERTILITY	22
TORCH	24
DRUGS OF ABUSE	25
SELF-TEST	28

# ABOUT US

## | Our Story |

Vitrosens Biotechnology Inc., founded in Türkiye, has brought together R&D, production, and sales, since our establishment, to provide and develop accurate, game-changing in vitro diagnostic solutions. The company is a leading diagnostics firm committed to advancing science and improving the world through innovative technologies and groundbreaking research.



Our company operates the largest rapid test kit facility in Türkiye, and our manufacturing processes are carried out under ISO 13485: 2016 compliant quality systems. Our quality management systems have a Medical Device Single Audit Program (MDSAP) standards. The company's success is founded on our expertise in molecular biology, genetics, in-vitro-diagnostic (IVD), and point-of-care testing (POCT).

## | Quality Standards |



The Medical Device Single Audit Program enables an Auditing Organization recognized by MDSAP to perform a sole regulatory audit for a medical device manufacturer, meeting the applicable requirements of the regulatory authorities involved in the program.

### Jurisdictions:

- Therapeutic Goods Administration of Australia
- Brazil's Agência Nacional de Vigilância Sanitária
- Health Canada
- U.S. Food and Drug Administration



Health  
Canada

Santé  
Canada

## | Certificates |

- Republic of Türkiye Ministry of Health
- Medical Device Single Audit Program (MDSAP)
- Free Sales Certificates – From Türkiye, the UK and the European Union
- Republic of Türkiye Ministry of Agriculture and Forestry
- Therapeutic Goods Administration (TGA)
- Medicines and Healthcare products Regulatory Agency of UK (MHRA)
- ISO 13485:2016
- ISO 14644-1 Cleanrooms and Associated Controlled Environments approved Class 8 Production Area

## | Our Solutions |

- Rapid Test Kits Development
- Molecular Products Development
- Diagnostic Device Development
- OEM (Original Equipment Manufacturer)
- ODM (Original Design Manufacturer)
- Lyophilized Solution for MDx Solutions
- Immunofluorescence Assay Development

## | Why Vitrosens? |

- Broad Test Spectrum
- Innovative IVD Products
- Experienced R&D and P&D Team
- Central Location- Fast Delivery to All The World
- Daily Production Capacity: 500.000 Tests
- 10.000 m<sup>2</sup> Facility Area
- Environmental Sustainability

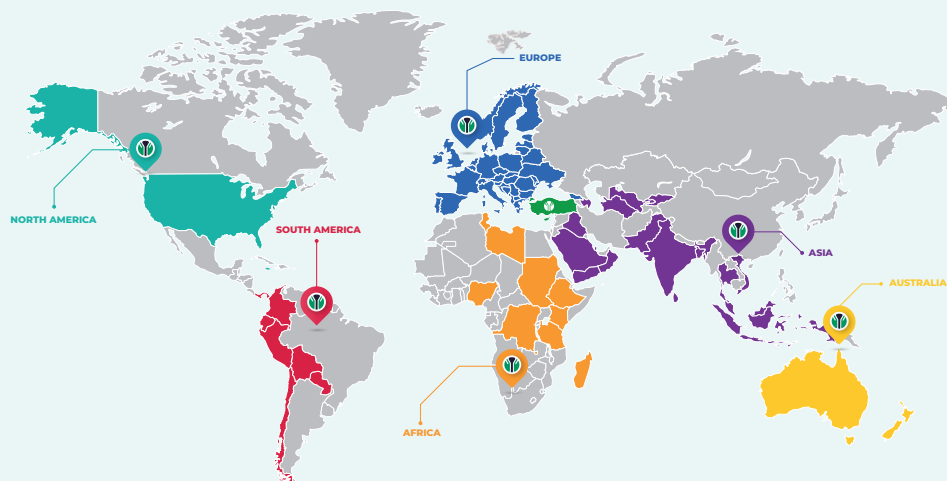
## | Global Presence |

**+50**  
Countries

**6**  
Continents

**+100**  
Partner Companies

**+100M**  
Production Capacity



## | Vitrosens Core Technology Platforms |



Colloidal Gold - Latex



Immunofluorescence



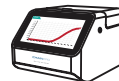
Molecular Diagnostic



Biomaterial



FIA Instrument



Molecular Instrument

## | Our Brands |

RapidFor

VetFor

MagFast

ChainPro

ChainFor

MagPro

ViraSens

LyoSens

FIAPro

DrugFor

VNFOR

VTFOR

# ABOUT US

## R&D CENTER

In 2016, our company took the establishment steps, it became a Research and Development (R&D) Centre by obtaining approval from the relevant ministry in Türkiye. Our company, which has focused on the importance of research and development since its establishment, makes all its investments in this direction.



## Academic and Clinical Partnerships

Located in Türkiye and abroad,

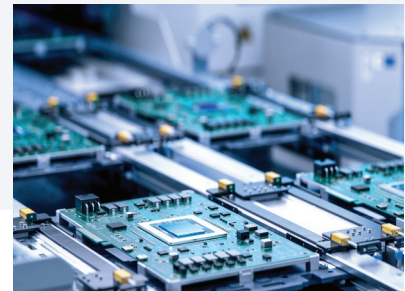
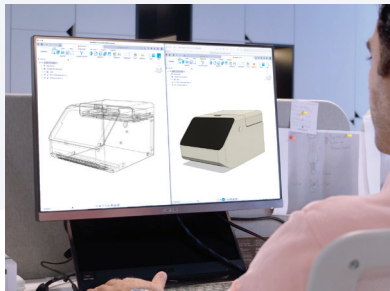
- Collaboration with recognized universities
- Product-performance evaluation cooperation with veterinary clinics for **Animal Health Division**
- Collaboration with specialized laboratories and hospitals in the field of **Human Health Division**



## PRODUCT & DEVICE DEVELOPMENT

Our product development department is constantly working on the development of rapid test cassettes and diagnostic devices using high-innovation technology.

- Test cassette design, molding and plastic injection
- Molecular Diagnostic Instruments: Real-Time PCR and Nucleic Acid Extraction device
- Immunofluorescence Instruments: Europium (3+) Based System
- Software Development: In house software application for our devices
- Main-board and circuit design



**Special Device  
Design**



**Designed digital  
print on cassettes**



**Production of  
electronical main-board**

## PRODUCTION

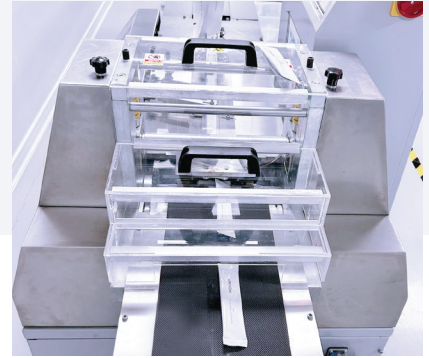
In co-operation with our successful R&D department, we produce at high standards in our **6000m<sup>2</sup> production area**. We take care to produce by keeping biosecurity at high levels with our **Clean Room** standard with ISO 14644 **Class 8** certificates. Our factory has the opportunity to work **7/24** if necessary to provide the best service to our valued partners.



Clean Room  
Production



Automated solution  
filling systems



Automated  
packaging systems

## ENVIRONMENTAL SUSTAINABILITY

Vitrosens Biotechnology, we are dedicated to restricting our plastic usage to preserve environmental resources, promote **sustainable** development, and minimize the **ecological impact** of our products by safeguarding ecosystems. Our distinctive approach is evident in the production of our biobased cassettes. These **bio-based cassette** are designed to be sustainable and **bio-degradable**. Serving as an environmentally friendly alternative to mass-produced plastic test cassettes, our commitment to **eco-friendly production** is strongly upheld under the **ISO 14001** standards we adhere to.



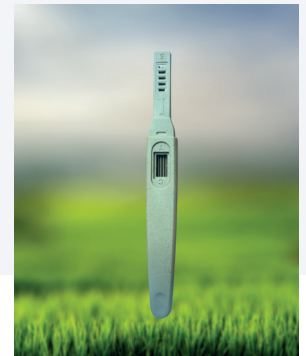
Biobase Cassette



Bio-degreable  
package



Paper Cassette



Bio-degreable  
Cassette



# IMMUNOCHROMATOGRAPHY TECHNOLOGY

## | Colloidal Gold Nanoparticles |

From the beginning, Vitrosens Biotechnology had the mission of developing diagnostic solutions and being developed as a part of these solutions. During our path to following this mission over the years, we developed our in-house colloidal gold nanoparticles, the core material for the developed technology, in the size of 40nm (Fig.1). We successfully integrated them into our rapid diagnostic solutions.

In-house produced Colloidal Gold Nanoparticles are characterized by using UV-Vis Spectrophotometry (Fig.2), Dynamic Light Scattering (DLS) (Fig.3), and Transmission Electron Microscope (TEM) imaging (Fig.4).

### In-house Colloidal Gold Nanoparticle Advantages:

1. **Custom-Engineering:** Ensuring the flexibility to manage quality and performance
2. **Enhanced Accuracy:** Higher sensitivity and specificity.
3. **Large-Scale Capacity:** Maximizing the production capacity and minimizing error rate.

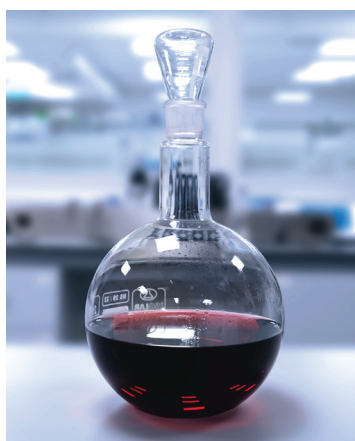


Fig.1

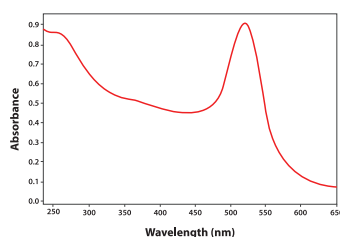


Fig.2

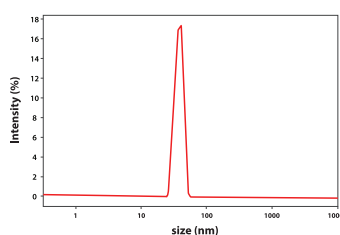


Fig.3

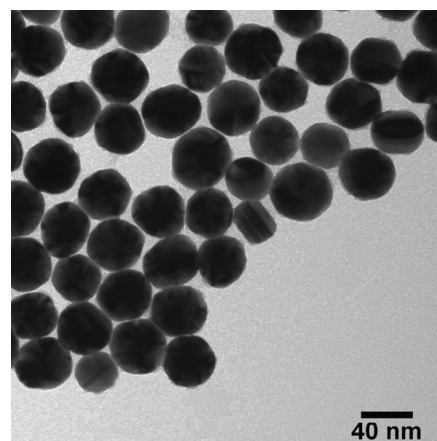


Fig.4

## | Latex Beads |

Our second most-used material in immunochromatography is the latex beads (200, 300 nm) (Fig.5), which give the advantages below:

1. **Enhanced Sensitivity:** The large surface area of latex beads increases the attachment area of target molecules.
2. **Flexible in Color:** Latex beads can be dyed in various colors, which ensures the Double-Colored LFA technology (Fig.6) and Triple-Colored LFA technology (Fig.7).



Fig.5



Fig.6



Fig.7



## | Rapid Diagnostic |

Our rapid kit are diagnostic devices designed to provide the best performance most simply. As Vitrosens Biotechnology, our rapid test portfolio mainly covers the diagnosis of gastrointestinal, and respiratory tract infections, tumor markers, and sexually transmitted diseases.



Easy-To-Use



Result In  
2-15 Minutes



Reliable



Easy To  
Interpret

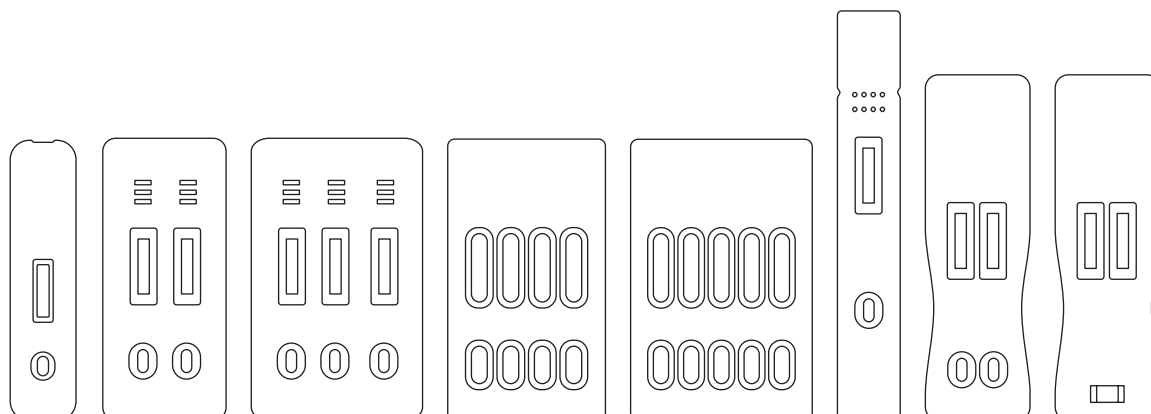


### Features

- Easy to use and interpret in several strip tests
- No need for special equipment
- Intended for single use
- Cost-effective
- Wide range of applications
- Regulatory compliance
- Minimize risk of error in result interpretation

## | Test Formats |

- Employ a singular device to conduct a variety of tests using a sole sample.
- Streamline the testing process with a single sample, minimal preparation, and the capability for panel testing.
- Diagnose multiple analytes swiftly, achieving results in a few minutes.
- Mitigate the risk of mishandling results through a design that reduces the likelihood of errors.
- Enhance operational efficiency with a testing system designed for seamless and rapid execution.



# SEXUALLY TRANSMITTED DISEASES

Sexually Transmitted Diseases (STDs) usually do not cause any symptoms, which makes them difficult to detect. The lack of symptoms, especially in the early stages of infection, causes detection difficulties and underlines the importance of regular screening and testing, especially for sexually active individuals. Our Sexually Transmitted Disease Solutions focus on the following pathogens:

## Viruses

- Human Papillomavirus (HPV)
- HIV/AIDS
- Hepatitis A
- Hepatitis B
- Hepatitis C
- Hepatitis E

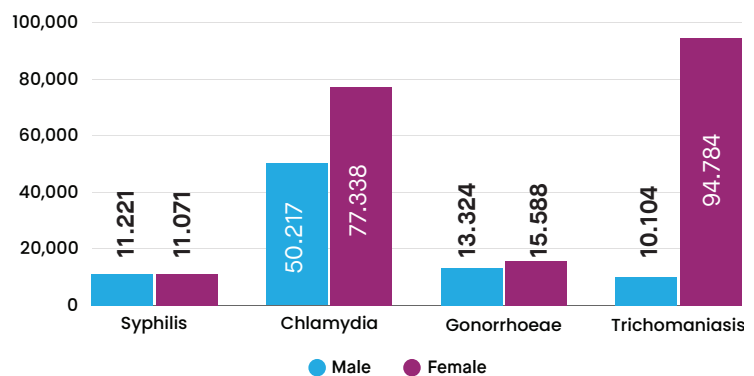
## Bacterias

- Chlamydia
- Gonorrhea
- Syphilis

## Protozoan parasite

- Trichomoniasis

Prevalent cases of STD (in thousands)



Source: World Health Organization, Last updated 2023-07-25

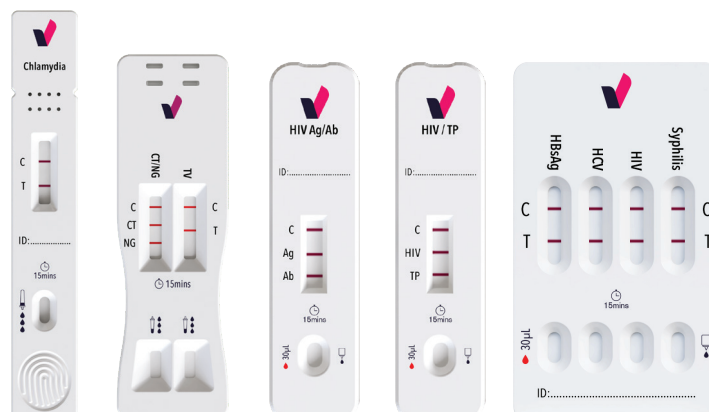
New infections of chlamydia, gonorrhoea, syphilis or trichomoniasis

**374 million**  
in adults 15 to 49 in 2020

New infections of chlamydia, gonorrhoea, syphilis or trichomoniasis

**over 1 million**  
new cases per day in adults 15 to 49 in 2020

Multiple results with a single sample.



# Chlamydia/Gonorrhea + Trichomonas Vaginalis

The RapidFor™ CT/NG + TV Combo Rrapid Test Kit is a diagnostic tool designed for the simultaneous detection of *Chlamydia trachomatis*, *Neisseria gonorrhoeae* and *Trichomonas Vaginalis*, three common sexually transmitted infections (STIs). This combo test kit is intended to provide quick and convenient results, within a short period, allowing for timely diagnosis and treatment.



- Box Content**
- Test cassette
  - Buffer A
  - Buffer B
  - Swab
  - Empty Tube
  - User manual

## Sexually Transmitted Diseases All Products

Ref. No	Name	Kit Size	Certificates
VMD01	HAV IgM Rapid Test Kit	25 T	ISO
VMD02	HBsAb Rapid Test Kit	25 T	ISO
VMD03	HCV Ab Rapid Test Kit	25 T	ISO
VMD04	Syphilis Ab Rapid Test Kit	25 T	CE
VMD10	HBsAg Rapid Test Kit	25 T	ISO
VMD12	HIV (1/2) Rapid Test Kit	25 T	ISO
VMD13	HIV (1/2) Rapid Test Kit (Oral Fluid)	25 T	ISO
VMD14 ★	HIV Ag/Ab Rapid Test Kit	25 T	ISO
VMD32 ★	HIV (1/2) / Syphilis Rapid Test Kit	25 T	ISO
VMD33	HBsAg + HCV + HIV + TP Combo Rapid Test Kit	25 T	ISO
VMD30	Chlamydia Trachomatis Rapid Test Kit	25 T	ISO
VMD39	Neisseria Gonorrhoeae Rapid Test Kit	25 T	CE, MHRA
VMD109 ★	Chlamydia + Gonorrhea Combo Rapid Test Kit	25 T	ISO
VMD105	HEV IgM Rapid Test Kit	25 T	CE
VMD114 ★	Trichomonas Vaginalis Rapid Test Kit	25 T	CE
VMD142	CT/NG Rapid Test Kit	25 T	ISO
VMD143 ★	CT/NG + TV Combo Rapid Test Kit	25 T	ISO

★ Highlighted Product

# RESPIRATORY DISEASES

Respiratory diseases are caused by various microorganisms that infect the respiratory tract. These pathogens can infect various parts of the respiratory system, including the upper respiratory tract (nose, throat, and sinuses) and the lower respiratory tract (lungs and airways). Our Respiratory Diagnostic Solutions focus on the following pathogens:

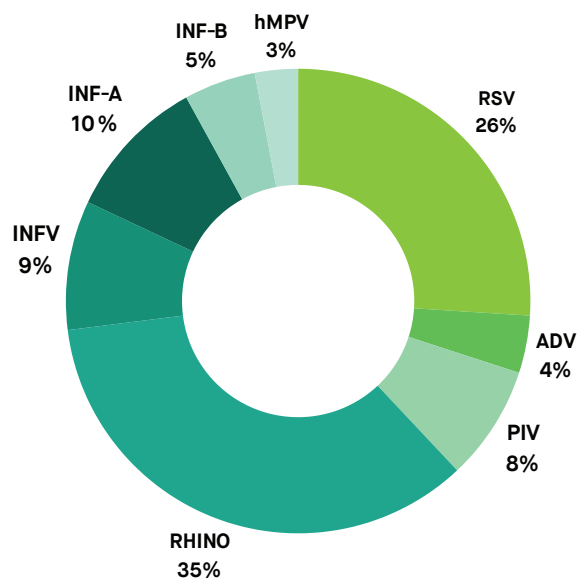
## Viruses

- Influenza Viruses
- Respiratory Syncytial Virus (RSV)
- Coronaviruses
- Adenovirus (ADV)
- Human metapneumovirus (hMPV)

## Bacteria

- *Streptococcus pyogenes*
- *Mycoplasma pneumoniae*
- *Legionella pneumoniae*
- *Streptococcus pneumoniae*

## World prevalence rates of respiratory viral infections

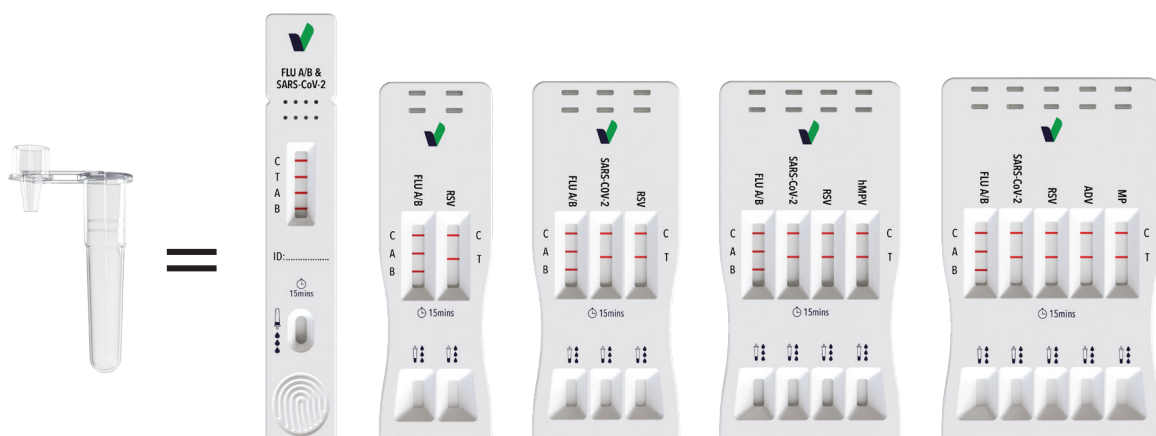


Source: ICMR-National AIDS Research Institute

## Sampling



## Multiple results with a single sample.



# SARS-CoV-2 + FLU A/B + RSV + hMPV

The SARS-CoV-2 + FLU A/B + RSV + hMPV Combo Rapid Test refers to a combination test designed to simultaneously detect multiple respiratory viruses, including the SARS-CoV-2 virus responsible for COVID-19, influenza A and B viruses, Respiratory Syncytial Virus (RSV) and Human metapneumovirus (hMPV). This type of combo test is commonly used to assess or diagnose respiratory infections, especially during seasons when these viruses are prevalent.



## Box Content

- Test Cassette
- Sample Collection Swab
- Extraction Buffer
- Instruction for use

## Respiratory Diseases All Products

Ref. No	Name	Kit Size	Certificates
VSCD01	SARS-CoV-2 IgG/IgM Test Kit	25 T	CE
VSCD05	SARS-CoV-2 Saliva Antigen Test Kit	25 T	CE
VSCD08	SARS-CoV-2 & FLU A/B Rapid Antigen Test Kit	25 T	CE
VSCD02	SARS-CoV-2 Rapid Antigen Test Kit	25 T	CE
VSCD02ST	SARS-CoV-2 Rapid Antigen Test Kit (Nasal)	1/2/5 T	CE, TGA
VSCD10	SARS-CoV-2 & FLU A/B Antigen Combo Test Kit	25 T	CE, TGA
VSCD10ST	SARS-CoV-2 & FLU A/B Antigen Combo Test Kit (Nasal)	1/2/5 T	CE, TGA
VMD80	SARS-CoV-2 + RSV Combo Rapid Test Kit	25 T	CE
VMD71 ★	SARS-CoV-2 + FLU A/B + RSV Combo Rapid Test Kit	25 T	CE
VMD71ST	SARS-CoV-2 + FLU A/B + RSV Combo Rapid Test Kit (Nasal)	1/2/5 T	CE, TGA
VMD79 ★	SARS-CoV-2 + FLU A/B + RSV + ADV Combo Rapid Test Kit	20 T	CE
VMD81	SARS-CoV-2 + FLU A/B + RSV + ADV + M. pneumoniae Combo Rapid Test Kit	20 T	CE
VMD17	Influenza A/B Rapid Test Kit	25 T	CE, MHRA
VMD77 ★	FLU A/B + RSV Combo Test Kit	25 T	CE, MHRA
VMD66	RSV Rapid Test Kit	25 T	CE, MHRA
VMD112 ★	RSV/Adeno Rapid Test Kit	25 T	CE
VMD140	hMPV Rapid Antigen Test Kit	25 T	CE
VMD141 ★	SARS-CoV-2 + Flu A/B + RSV + hMPV Combo Rapid Test Kit	20 T	CE
VMD83 ★	ADV Resp. Rapid Test Kit	25 T	CE
VMD65	Mycoplasma pneumoniae Ab Rapid Test Kit	25 T	CE
VMD82	Mycoplasma pneumoniae Ag Rapid Test Kit	25 T	CE
VMD101	ADV + M. pneumoniae Ag Combo Rapid Test Kit	25 T	CE
VMD36 ★	Strep A Rapid Test Kit	25 T	CE, MHRA
VMD37	Tuberculosis IgG/IgM Rapid Test Kit	25 T	CE, MHRA
VMD139	Mycobacterium tuberculosis MPT64 Antigen Rapid Test Kit	25 T	CE
VMD92 ★	Legionella pneumoniae Rapid Test Kit	25 T	CE
VMD110	Streptococcus pneumoniae Rapid Test Kit	25 T	CE

★ Highlighted Product

# GASTROINTESTINAL DISEASES

Gastrointestinal diseases refer to a group of disorders that affect the digestive system, which includes the stomach, intestines, liver, gallbladder, and other associated organs. These diseases can affect people of all ages and can range from mild to severe. Early detection and management can significantly improve outcomes for many gastrointestinal conditions. Our Gastrointestinal Disease Solutions focus on the following pathogens:

## Viruses

- Rotavirus
- Adenovirus
- Norovirus
- Astrovirus
- Enterovirus

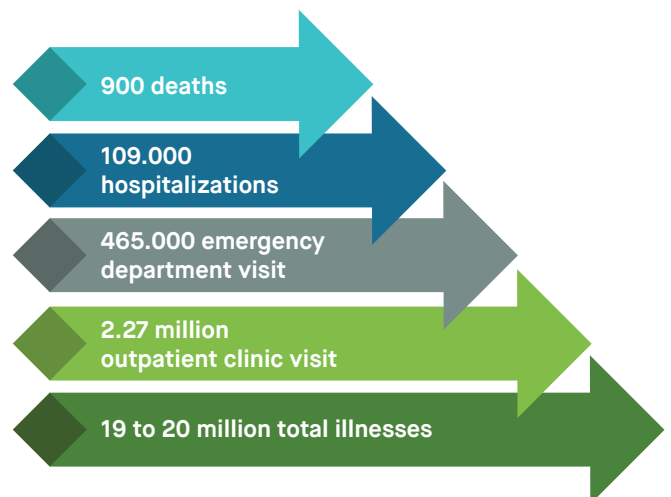
## Bacteria

- *Helicobacter pylori* (*H. pylori*)
- *Salmonella Typhi*
- *Clostridioides difficile* (*C. difficile*)
- *Vibrio cholera*

## Protozoans

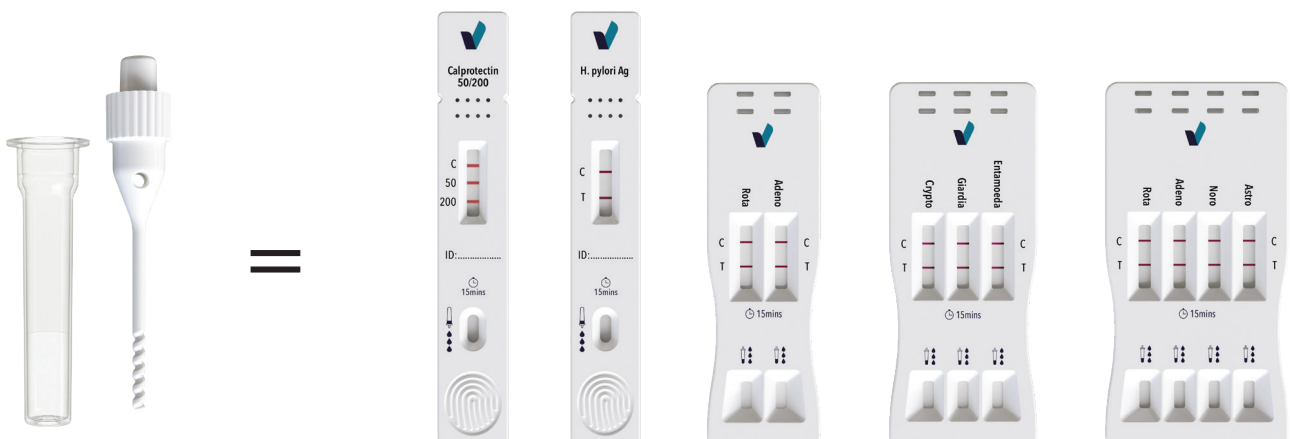
- *Giardia Lamblia*
- *Cryptosporidium parvum*
- *Entamoeba histolytica*, *Entamoeba dispar*

## Burden of Norovirus in the United States



Source: Centers for Disease Control and Prevention

## Multiple results with a single sample.





# Rota + Adeno + Noro + Astrovirus

The RapidFor™ Rota + Adeno + Noro + Astrovirus Combo Rapid Test Kit is a combination rapid antigen test designed to detect antigens associated with four different viruses: Rotavirus, Adenovirus, Norovirus, and Astrovirus.



## Box Content

- Test Cassette
- Sample Diluent
- Collection Apparatus
- Dropper Cap
- Instruction For Use

## Gastrointestinal All Products

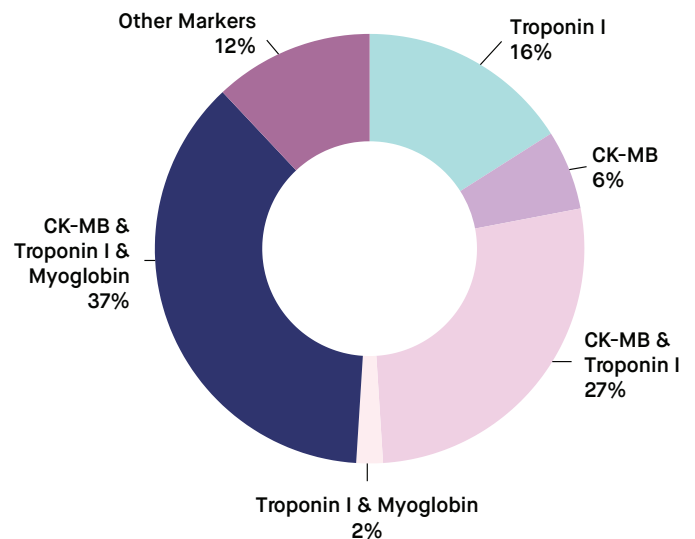
Ref. No	Name	Kit Size	Certificates
VMD16 ★	H.Pylori Ag Rapid Test Kit	20 T	CE, MHRA
VMD35	H.Pylori Ab Rapid Test Kit	25 T	CE, MHRA
VMD136	Campylobacter Rapid Test Kit	20 T	CE
VMD27	Salmonella Typhi Rapid Test Kit	20 T	CE, MHRA
VMD24	Rotavirus Rapid Test Kit	20 T	CE, MHRA
VMD40	Adenovirus Rapid Test Kit	20 T	CE, MHRA
VMD41	Norovirus Rapid Test Kit	20 T	CE, MHRA
VMD42	Astrovirus Rapid Test Kit	20 T	CE
VMD25	Rota + Adeno Virus Combo Rapid Test Kit	20 T	CE
VMD75 ★	Rota/Adeno Rapid Test Kit	20 T	CE
VMD84 ★	Rota/Adeno + Norovirus Combo Rapid Test Kit	20 T	CE
VMD93	Rota + Adeno + Norovirus Combo Rapid Test Kit	20 T	CE
VMD91 ★	Rota + Adeno + Noro + Astrovirus Combo Rapid Test Kit	20 T	CE
VMD88	C.difficile GDH Rapid Test Kit	20 T	CE
VMD89	C.difficile Toxin A + B Combo Rapid Test Kit	20 T	CE
VMD67	Giardia Lamblia Rapid Test Kit	20 T	CE, MHRA
VMD68	Cryptosporidium Rapid Test Kit	20 T	CE, MHRA
VMD69	Entamoeba Rapid Test Kit	20 T	CE
VMD94 ★	Crypto + Giardia + Entamoeba Combo Rapid Test Kit	20 T	CE
VMD96	C.difficile GDH + Toxin A + Toxin B Combo Rapid Test Kit	20 T	CE
VMD107	Crypto + Giardia Combo Rapid Test Kit	20 T	CE
VMD87	Cholera O1/O139 Rapid Test Kit	20 T	CE
VMD115	Calprotectin Rapid Test Kit	20 T	CE
VMD116	Lactoferrin Rapid Test Kit	20 T	CE
VMD117	Transferrin Rapid Test Kit	20 T	CE
VMD70	FOB + Transferrin Combo Rapid Test Kit	20 T	CE, MHRA
VMD118	FOB + Transferrin + Calprotectin + Lactoferrin Combo Rapid Test Kit	20 T	CE
VMD123 ★	Entamoeba + Giardia Combo Rapid Test Kit	20 T	CE
VMD137	Calprotectin (50µg/g+ 200µg/g) Combo Rapid Test Kit	20 T	CE
VMD144	E.coli O157 Rapid Test Kit	20 T	CE
VMD145	E.coli H7 Rapid Test Kit	20 T	CE

# CARDIAC MARKERS

Cardiac markers are substances released into the blood when the heart is damaged or stressed. These markers are commonly used in medical diagnostics, particularly in the context of cardiac conditions and events such as heart attacks. Cardiac marker testing is often performed in emergency rooms, hospitals, and clinical settings to help diagnose and assess heart-related conditions. At Vitrosens Biotechnology, we particularly focus on the following markers.

- Troponins
- Creatine Kinase-MB (CK-MB)
- Myoglobin
- Heart-Type Fatty Acid Binding Protein (H-FABP)
- N-Terminal pro-Brain Natriuretic Peptide (NT-proBNP)
- D-Dimer

## The Most Commonly Used Cardiac Markers



Source: American Association for Clinical Chemistry

Multiple results with a single sample.



# Troponin I

The RapidFor™ Troponin I Rapid Test Kit is a diagnostic tool designed to detect the presence of troponin I in a patient's blood sample. Troponin I is a cardiac muscle protein released into the bloodstream when there is damage to the heart muscle, particularly during events such as myocardial infarction (heart attack).



## Box Content

- Test Cassette
- Sample diluent
- Dropper
- User manual

Cut off  
0,5 ng/mL

# Myo + CK-MB + Troponin I

The test is a rapid chromatographic immunoassay for the qualitative detection of human Myoglobin, CK-MB, and cardiac Troponin I in whole blood, serum, or plasma as an aid in the diagnosis of myocardial infarction (MI).



## Box Content

- Test Cassette
- Sample diluent
- Dropper
- User manual

## Cardiac Markers All Products

Ref. No	Name	Cut-off	Kit Size	Certificates
VMD49	Troponin I Rapid Test Kit	0.5 ng/mL	25 T	CE
VMD50	Myoglobin Rapid Test Kit	50 ng/mL	25 T	CE
VMD51	CK-MB Rapid Test Kit	5 ng/mL	25 T	CE
VMD54	NT-proBNP Rapid Test Kit	0.45 ng/mL	25 T	CE
VMD56	D-Dimer Rapid Test Kit	500 ng/mL	25 T	CE
VMD55 ★	Myo + CK-MB + Troponin I Combo Rapid Test Kit	cTnI: 0.5 ng/mL Myo: 50 ng/mL CK-MB: 5 ng/mL	25 T	CE

★ Highlighted Product

# TROPICAL DISEASES

Tropical diseases encompass a diverse group of infectious diseases that prevail in tropical and subtropical regions of the world. These diseases are often associated with poverty, poor sanitation, and limited access to healthcare. Our Tropical Disease Solutions focus on the following pathogens:

## Viruses

- Dengue
- Chikungunya
- Zika Virus

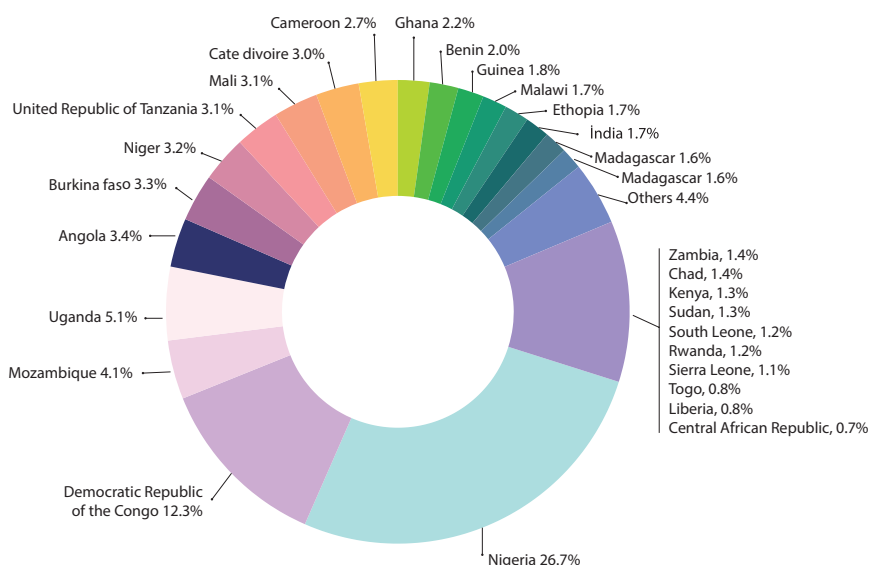
## Bacteria

- *Salmonella Typhi*

## Protozoan parasite

- *Plasmodium spp.*

Distribution of Malaria cases by Africa countries



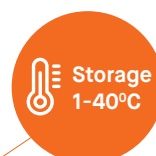
Source: World Health Organization, World Health Statistics 2023

Our innovative approach ensures **quick** and **accurate results**, facilitating timely diagnosis and **intervention** in the fight against these challenging health conditions.



# Dengue NS1 Ag

The RapidFor™ Dengue NS1 Ag Rapid Test Kit is an in vitro diagnostic test designed to quickly diagnose infections caused by the dengue virus. Dengue fever is an infection caused by the dengue virus, which is transmitted through the bite of Aedes mosquitoes.



## Box Content

- Test cassette
- Sample diluent
- Dropper
- User Manual

## Tropical All Products

Ref. No	Name	Kit Size	Certificates
VMD08 ★	Dengue NS1 Ag Rapid Test Kit	25 T	CE, MHRA
VMD38	Dengue IgG/IgM Rapid Test Kit	25 T	CE, MHRA
VMD06 ★	Dengue IgG/IgM + NS1 Combo Rapid Test Kit	25 T	CE, MHRA
VMD20	Malaria P.f. (HRP2) Rapid Test Kit	25 T	CE
VMD21 ★	Malaria P.f. / Pan Rapid Test Kit	25 T	CE, MHRA
VMD22 ★	Malaria P.f. / P.v. Rapid Test Kit	25 T	CE
VMD128	Malaria P.f. pLDH / HRP2 Rapid Test Kit	25 T	CE
VMD52	Chikungunya IgG/IgM Rapid Test Kit	25 T	CE
VMD29	Typhoid IgG/IgM Rapid Test Kit	25 T	CE, MHRA
VMD43	Zika IgM Rapid Test Kit	25 T	CE

★ Highlighted Product

# TUMOR MARKERS

Tumor markers are substances that can be detected in the blood, urine, or tissues and may indicate the presence of cancer. These markers are often produced by cancer cells or by other cells in the body in response to the presence of cancer. It's important to note that the presence of a tumor marker doesn't necessarily confirm the presence of cancer. At Vitrosens Biotechnology, we particularly focus on the following markers.

## Prostate-Specific Antigen (PSA):

Associated with prostate cancer. Elevated PSA levels may indicate the presence of prostate cancer, but other conditions can also cause PSA levels to rise.

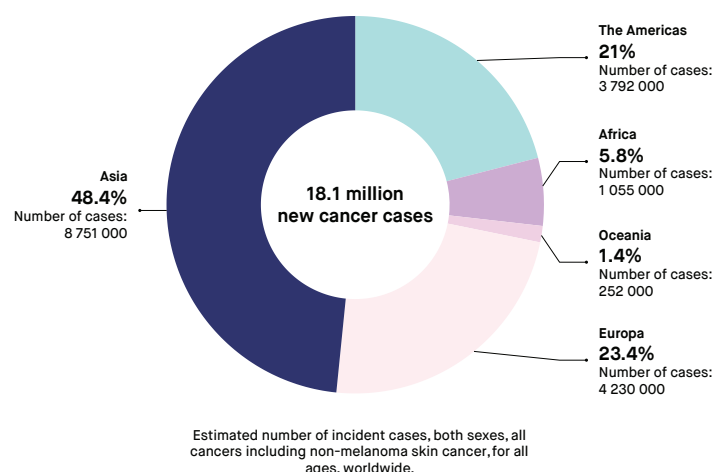
## Carcinoembryonic Antigen (CEA):

Associated with colorectal cancer. Elevated CEA levels may also be found in other cancers and non-cancerous conditions.

## Alpha-Fetoprotein (AFP):

Associated with liver cancer (hepatocellular carcinoma) and certain types of testicular cancer.

## Global Cancer Incidence



Source: Washington DC-based American Institute of Cancer Research (AICR) and the World Health Organization.

Ensures an **effective** and promising solution for reliable detection of various **cancer indicators**, contributing to early diagnosis.



Cut off  
4 ng/mL



# PSA

The RapidFor™ PSA Rapid Test Kit is an in vitro diagnostic tool designed to detect the presence of prostate-specific antigen (PSA) in whole blood, serum, or plasma samples. PSA is a protein produced by the prostate gland, and elevated levels of PSA in the blood may indicate conditions such as prostate cancer or other prostate-related issues. The test is often used as a screening tool to assess prostate health.



## Box Content

- Test cassette
- Sample Diluent
- Dropper
- User Manual

Cut off  
4 ng/mL

## Tumor Markers All Products

Ref. No	Name	Cut-off	Kit Size	Certificates
VMD09	FOB Rapid Test Kit	50 ng/mL	20 T	CE
VMD44	AFP Rapid Test Kit	10 ng/mL	25 T	CE
VMD45	CEA Rapid Test Kit	5 ng/mL	25 T	CE
VMD46 ★	PSA Rapid Test Kit	4 ng/mL	25 T	ISO

★ Highlighted Product

# FERTILITY

Strip Test



Midstream Test



Cassette Test



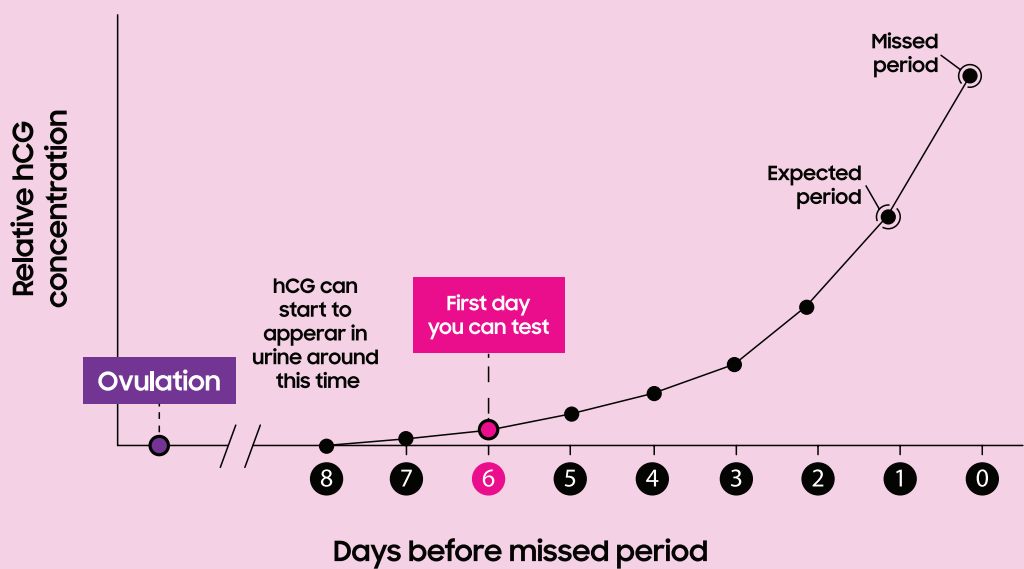
Test Portfolio with **Three Diverse Formats** Provide Early Detection of the **Pregnancy Hormone** (hCG).

# Early Pregnancy

The RapidFor™ Early Pregnancy Test is a type of home pregnancy test designed to detect the presence of human chorionic gonadotropin (hCG) in a woman's urine. hCG is a hormone produced during pregnancy, and its levels increase as the pregnancy progresses. Early pregnancy tests are specifically formulated to be more sensitive and may claim to detect pregnancy even before a missed period.



Rise of pregnancy hormone (hCG) in **early pregnancy**



## Fertility All Products

Ref. No	Name	Cut-Off	Kit Size	Certificates
VMD59 ★	Early Pregnancy Test Kit	10 mIU/mL	1/2/5/10 T	CE
VMD61	Ovulation LH Rapid Test Kit	25 mIU/mL	1/2/5/10 T	CE, FDA
VMD60 ★	Pregnancy Test Kit	25 mIU/mL	1/2/5/10 T	CE
VMD86	FSH (Menopause) Rapid Test Kit	25 mIU/mL	1/2/5/10 T	CE

★ Highlighted Product

# TORCH

"TORCH" is an acronym that represents a group of infectious agents that can cause congenital (present at birth) infections. Each letter in TORCH refers to a specific infectious agent:

**T - Toxoplasmosis:** Caused by the parasite *Toxoplasma gondii*. Infections during pregnancy can potentially lead to birth defects.

**O - Other (Varicella-Zoster, Parvovirus B19):**

- Varicella-Zoster (Chickenpox): Infection during pregnancy can harm the fetus.
- Parvovirus B19: This virus can cause a fifth disease in children and can have complications during pregnancy.

**R - Rubella:** Also known as German measles, it is caused by the rubella virus. Infection during early pregnancy can lead to congenital rubella syndrome.

**C - Cytomegalovirus (CMV):** Caused by the cytomegalovirus, a type of herpesvirus. CMV infections can occur during pregnancy and may pose risks to the developing fetus.

**H - Herpes Simplex Virus (HSV):** Infection with herpes simplex virus, which can cause genital herpes. Neonatal herpes can occur if a mother has a primary HSV infection during late pregnancy.

## Toxo IgG/IgM

The RapidFor™ *Toxoplasma* IgG/IgM Rapid Test Kit is a diagnostic tool used for the detection of antibodies against the *Toxoplasma gondii* parasite. *Toxoplasma gondii* is a microscopic parasite that can infect humans and animals, causing a condition known as toxoplasmosis.



### Box Content

- Test Cassette
- Sample diluent
- Dropper
- Instruction for Use

## Torch All Product

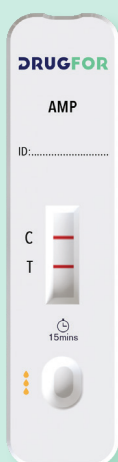
Ref. No	Name	Kit Size	Certificates
VMD26	Rubella IgG/IgM Rapid Test Kit	25 T	ISO
VMD28 ★	Toxo IgG/IgM Rapid Test Kit	25 T	ISO
VMD125	HSV (1/2) IgG/IgM Rapid Test Kit	25 T	CE

★ Highlighted Product

# DRUG OF ABUSE

Drug of abuse tests, commonly known as drug tests or screenings, are diagnostic tests used to detect the presence of specific substances or their metabolites in a person's body. These tests are often employed for various purposes, including workplace testing, athletic competitions, legal matters, and healthcare assessments. The most common types of drug of abuse tests include urine tests and saliva tests.

## Single Cassette Test



## Strip Version of Test



## Single Dip-stick Test



**DrugFor™** can be utilized to investigate suspected drug addiction with **three different test versions**.

# Urine Multi-Drug

The DrugFor™ Urine Multi-Drug Test is a diagnostic tool designed to simultaneously detect the presence of multiple drugs or their metabolites in a urine sample. These tests are commonly used for various purposes, including workplace drug testing, clinical assessments, forensic investigations, and substance abuse treatment programs.



Urine **adulteration** test strips indicate whether a urine sample is valid to used in drug testing. The strip can give rapid and semi-quantitative detection with any 3 combination of the following 6 parameters.

• Creatinine • Nitrite • Glutaraldehyde • pH • Specific Gravity • Oxidants

E CRE CRE C IT NIT NIT NI J GLU GLU G pH pH pH pH SG SG SG SG XI OXI OXI O



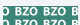



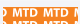


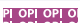
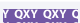


Drugs and drug metabolites we can screen		
Drug	Description	Cut-off (ng/mL) for Urine Sample
<div><div>AMP AMP A</div><div>AMP AMP A</div></div>	Amphetamine (AMP)	1000 or 500
<div><div>BAR BAR B</div><div>BAR BAR B</div></div>	Barbiturates (BAR)	300
<div><div>BZO BZO B</div><div>BZO BZO B</div></div>	Benzodiazepines (BZO)	300 or 150
<div><div>BUP BUP B</div><div>BUP BUP B</div></div>	Buprenorphine (BUP)	10
<div><div>COC COC C</div><div>COC COC C</div></div>	Cocaine (COC)	300 or 150
<div><div>THC THC T</div><div>THC THC T</div></div>	Marijuana (THC)	150
<div><div>MET MET N</div><div>MET MET N</div></div>	Methamphetamine (MET)	1000
<div><div>MTD MTD M</div><div>MTD MTD M</div></div>	Methadone (MTD)	300
<div><div>MDMA MDMA</div><div>MDMA MDMA</div></div>	Methylenedioxymethamphetamine-ecstasy (MDMA)	500
<div><div>MOP MOP M</div><div>MOP MOP M</div></div>	Morphine (MOP)	300 or 150
<div><div>QXY QXY Q</div><div>QXY QXY Q</div></div>	Oxycodone (OXY)	100
<div><div>PCP PCP P</div><div>PCP PCP P</div></div>	Phencyclidine (PCP)	25
<div><div>PPX PPX P</div><div>PPX PPX P</div></div>	Propoxyphene (PPX)	300
<div><div>TCA TCA T</div><div>TCA TCA T</div></div>	Tri-cyclic Antidepressants (TCA)	1000
<div><div>K2 K2 K2</div><div>K2 K2 K2</div></div>	Synthetic Cannabis (K2)	50 or 25
<div><div>OPI OPI O</div><div>OPI OPI O</div></div>	Opiate (OPI2000)	2000
<div><div>TRA TRA T</div><div>TRA TRA T</div></div>	Tramadol (TRA)	100
<div><div>EDDP EDDP</div><div>EDDP EDDP</div></div>	Methadone Metabolite (EDDP)	300 or 100
<div><div>FYL FYL F</div><div>FYL FYL F</div></div>	Fentanyl (FTY)	20
<div><div>COT COT C</div><div>COT COT C</div></div>	Cotinine (COT)	200
<div><div>ETG ETG E</div><div>ETG ETG E</div></div>	Ethyl Glucuronide (ETG)	500 or 300
<div><div>KET KET K</div><div>KET KET K</div></div>	Ketamine (KET)	1000
<div><div>MQL MQL M</div><div>MQL MQL M</div></div>	Methaqualone (MQL)	300



# Saliva Multi-Drug Test

The DrugFor™ Saliva Multi-Drug Test Cup is a diagnostic tool designed to simultaneously detect the presence of multiple drugs or their metabolites in a saliva (oral fluid) sample. The multi-drug test cups provide a convenient and non-invasive way to collect and test saliva for the presence of drugs.



Drugs and drug metabolites we can screen		
Drug	Description	Cut-off (ng/mL) for Oral Fluid Sample
 AMP AMP A	Amphetamine (AMP)	50
 BAR BAR B	Barbiturates (BAR)	50
 BZO BZO B	Benzodiazepines (BZO)	50
 BUP BUP B	Buprenorphine (BUP)	10
 COC COC C	Cocaine (COC)	50
 THC THC T	Marijuana (THC)	50
 MTD MTD M	Methadone (MTD)	50
 MET MET M	Methamphetamine (MET)	25
 MDMA MDMA M	Methylenedioxymethamphetamine (MDMA)	50
 OPI OPI O	Opiate (OPI)	40
 OXY OXY O	Oxycodone (OXY)	50
 PCP PCP P	Phencyclidine (PCP)	10
 FTY FTY F	Fentanyl (FTY)	10

Ref. No	Name	Kit Size	Certificates
VDDOA04 ★	Saliva Multi-Drug Test Cup	25/50T	CE

★ Highlighted Product





# SELF-TEST OPTIONS

## Vitamin D

The Vitamin D Rapid Test Kit is a quick and easy way to screen for a potential vitamin D deficiency using a blood sample. Low levels of vitamin D can cause a variety of symptoms, and in severe cases may lead to a loss in bone strength.

### Vitamin D Color Card

1. Conduct testing to obtain one control line (C) and one test line (T).
2. Compare the intensity of the test line (T) with the colored lines shown below.

$10 \leq x < 30$ ng/mL	
$30 \leq x < 60$ ng/mL	
$60 \leq x < 100$ ng/mL	
$100 \leq x$ ng/mL	



### Box Content

- Test cassette
- Sample diluent
- Capillary dropper
- Auto-lancet
- Alcohol swab (optional)
- User manual

## Ferritin

The Ferritin Rapid Test Kit is a diagnostic tool designed for the quick and convenient measurement of ferritin levels in the blood. Ferritin is a protein that stores iron in the body, and measuring its concentration is crucial for assessing iron status. Abnormal ferritin levels can indicate conditions such as iron deficiency or iron overload.



### Box Content

- Test cassette
- Sample diluent
- Capillary dropper
- Auto-lancet
- Alcohol swab (optional)
- User manual

# UTI - Leukocyte + Nitrite

The **UTI Strip Test (Leukocyte + Nitrite)** is a rapid chromatographic immunoassay designed for the qualitative detection of nitrite and leukocytes in urine. This self-use test allows for quick and accurate evaluation of early signs of urinary tract infections (UTIs) from the comfort of your home.

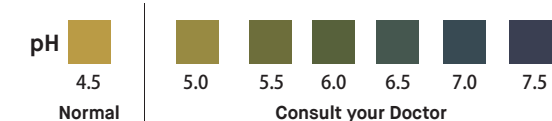
- Key Features:**
- **Rapid Results:** Provides results in just 2 minutes.
  - **Easy to Use:** User-friendly design requires no medical expertise.
  - **High Sensitivity:** Reliable performance in detecting nitrite and leukocytes.
  - **At-Home Monitoring:** Convenient for self-testing in a home environment.
  - **Portable and Practical:** Compact design makes it easy to use anywhere.



## Vaginal pH

The **Vaginal pH Test** is a rapid chromatographic immunoassay designed for the quantitative detection of pH levels in vaginal swab samples. This self-use test is an effective tool for assessing vaginal health and identifying potential imbalances that may indicate infections or other conditions.

- Key Features:**
- **Fast Results:** Obtain precise pH readings in just a few minutes.
  - **Accurate Detection:** Measures vaginal pH levels for reliable health monitoring.
  - **Easy to Use:** Simple design ensures effortless application without medical expertise.
  - **Self-Care at Home:** Convenient for routine vaginal health checks in a private setting.
  - **Portable Design:** Compact and travel-friendly for use anytime, anywhere.



## Self-Test All Product

Ref. No	Name	Cut-off	Kit Size
VMD64ST ★	Vitamin-D Rapid Test Kit	10-30 ng/mL	1/2/5 T
VMD97ST ★	Ferritin Rapid Test Kit	30 ng/mL	1/2/5 T
VMD98ST ★	TSH Rapid Test Kit	5 µIU/mL	1/2/5 T
VMD47ST ★	PCT Rapid Test Kit	0.5 ng/mL	1/2/5 T
VMD106ST ★	UTI Rapid Test Kit	-	1/2/5 T
VMD126ST	Vaginal pH Rapid Test Kit	-	1/2/5 T

★ Highlighted Product

Notes:.....

.....

.....

.....

.....

.....

.....

.....

.....

.....

.....

.....

.....

.....

.....

.....

.....

.....

.....

.....

.....

.....

.....

.....

.....

.....

.....

.....

.....

.....

.....

.....

.....



# VITROSENS

VO.V008-21012025